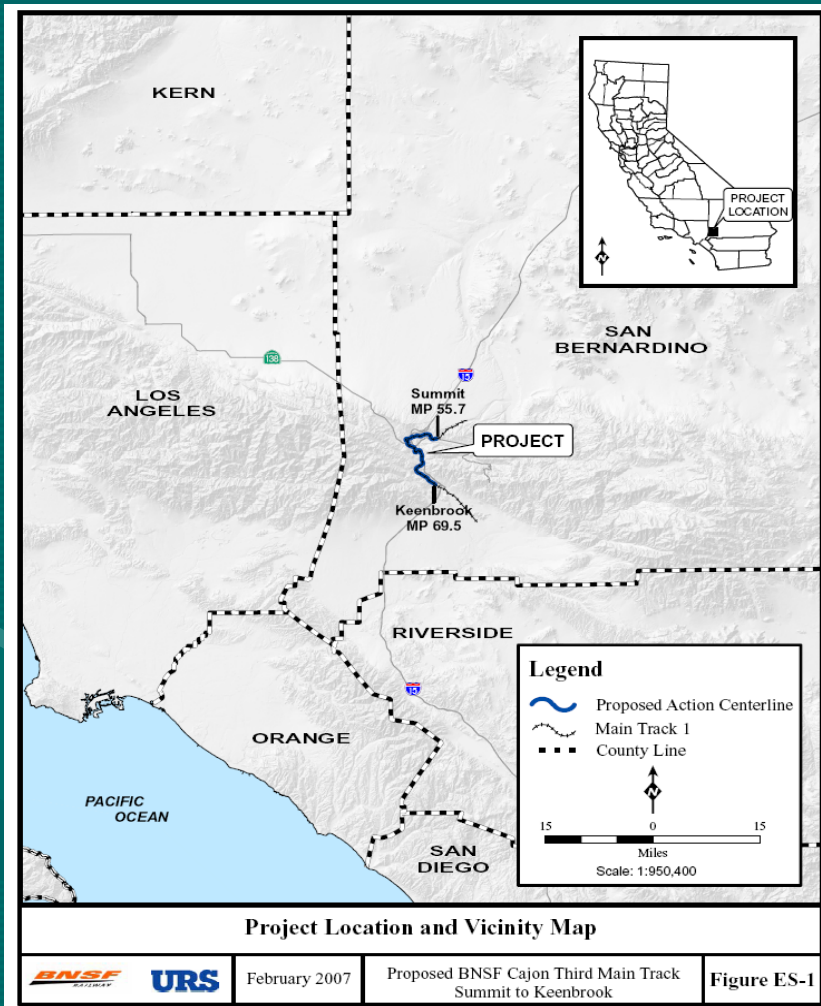


Railroad Project in the Cajon Pass, California

- The purpose of this presentation is to inform the general public of an important railroad project currently underway through the Cajon Pass.
- The project is a proactive venture by Burlington Northern Santa Fe Railroad designed to meet the present and future demand for freight movement through the Cajon Pass.
- Burlington Northern Santa Fe Railroad has over 150 years of railroad experience and a proud tradition of local inter-agency cooperation.
- The San Bernardino County Fire Department works closely with Burlington Northern Santa Fe Railroad to provide emergency response in the event of railroad incidents.

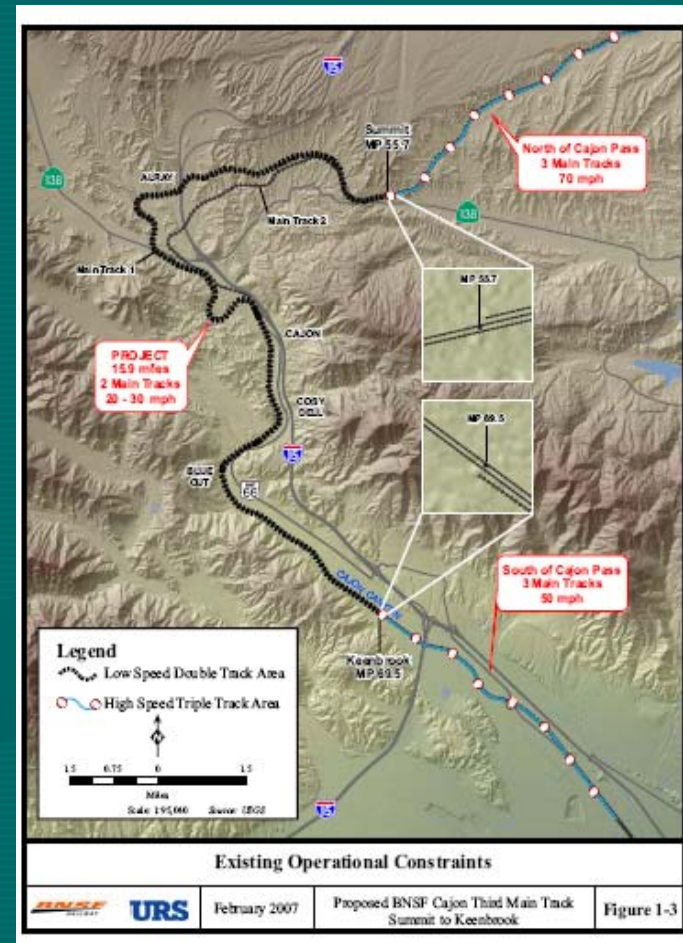
Burlington Northern Santa Fe Railroad's Cajon Pass Project



- The Cajon Pass is a major transportation corridor located between the San Bernardino Mountains and the San Gabriel Mountains in Southern California.
- This mountain pass is the old Route 66 connecting the Los Angeles Basin with all points north.

BNSF Cajon Pass Project

- The Cajon Pass accommodates railway traffic owned by Burlington Northern Santa Fe (BNSF) and Union Pacific Railroads.
- The Cajon Pass is a major economic thoroughfare carrying more than half of the goods originating from the Los Angeles and Long Beach ports, which are the two busiest seaports in the nation.
- BNSF has contracted with Ames Construction Company to complete the project.



Construction is Currently Underway

- The Ames Construction staff and crew are currently staged at two locations along the Cajon Pass.



Project Staging Area North of Highway 138



What is the Significance of a Third Rail Through the Cajon Pass?

From an Emergency Response standpoint, a third rail through the Cajon Pass increases the need for private and public emergency response preparedness.



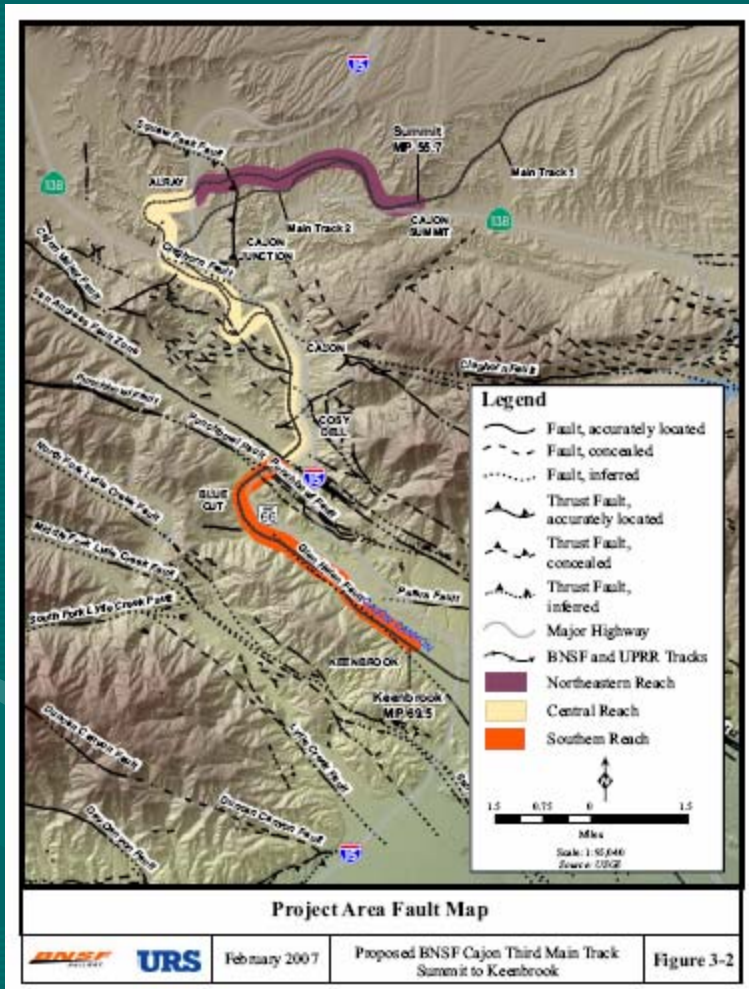
Over 100 trains currently travel through the Cajon Pass on any given day. The extra rail is projected to increase rail traffic by 50 percent.

Utilities in “At Risk Locations” Create a need for Ongoing Emergency Response Training

- Power lines, natural gas, and petroleum pipelines exist along the railroad route through the Cajon Pass.



Natural Threats to Railroad and Vehicle Traffic Through the Cajon Pass



- Seismic studies conducted in 1991 by Intech, Inc. for Fema and 2005 by CHJ, Incorporated for BNSF, agree on the natural threats.
- Surface fault ruptures and ground failure (including landslides and liquefaction) would potentially cause major damage to railroad, highway, and utility lifelines along the Cajon Pass.

Railway Incidents along the Cajon Pass



Derailement of Freight Train H-BALT1-31
Atchison, Topeka and Santa Fe Railway
Company Near Cajon Junction, California
February 1, 1996

- The San Bernardino County Fire Department continues to train and prepare for railway incidents from past and present situations.



Railway Emergency Response

- San Bernardino County Fire Department's Emergency Response Team has extensive experience with railway incidents.



Multi-Agency Railway Response



In coordination with railway agencies, San Bernardino County Fire Department participates in 24-hour and all-weather multi-agency training and response.



The Incident Command System (ICS)

The **Incident Command System (ICS)** is a management system used to organize emergency response. ICS offers a scalable response to an emergency (incident) of any magnitude, and provides a common framework within which people can work together. These people (resources) may be drawn from multiple agencies that do not routinely work together. The system is designed to grow and shrink along with the incident, allowing more resources to be smoothly added into the system when needed and released when no longer needed. This is achieved because, in essence, ICS is a special case of role-playing. Authorities and responsibilities are inherent in roles (positions); individuals are assigned more or less temporarily to those roles, and can be reassigned, replaced, or released as needed. This key aspect of ICS helps to reduce or eliminate the "who's in charge" problem.

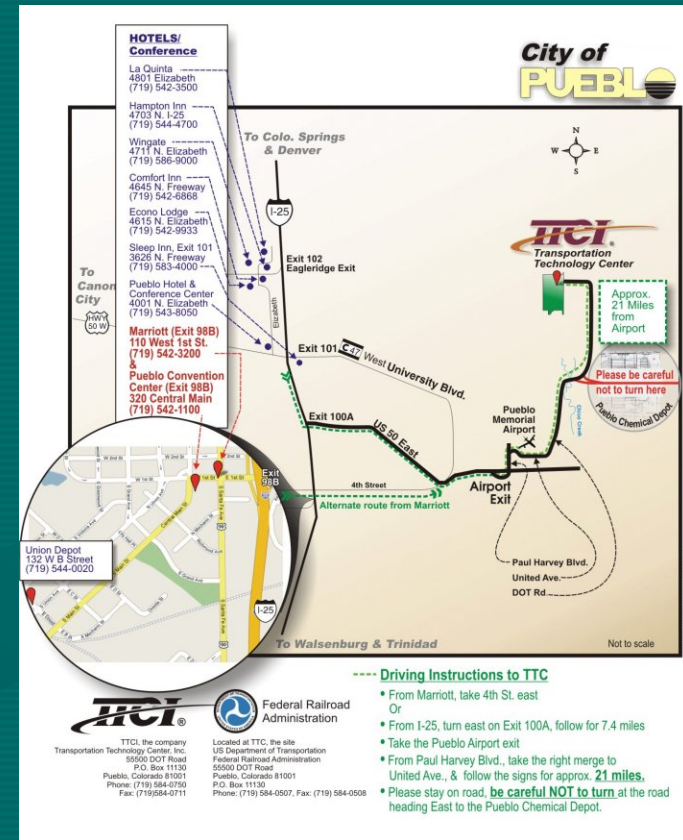
Railway Emergency Response Training

- Incident Command System (ICS) and the State Emergency Management System are taught and practiced.
- Railcar identification and evaluation of tank cars and emergencies, and mitigation of chemical emergencies are also part of the basic training.



Interagency Railway Training

- Transportation Technology Center, Inc. (TTCI) is a wholly owned subsidiary of the Association of American Railroads headquartered near Pueblo, Colorado.
- San Bernardino County Fire Department Emergency Response Team members attend a five day Tank Car Safety Course at this facility.
- The training includes identification, evaluation, and mitigation of emergency incidences involving railroad chemical transportation.
- National Incident Management System (NIMS).



SEMS and NIMS

- The [California Implementation Guidelines for the National Incident Management System](#) were approved by the SEMS Advisory Board on April 26, 2006. The Guidelines were developed to support NIMS compliance by state agencies, local and tribal government, and formed the basis for 12 workshops held during the summer of 2006. The Guidelines are available through the Governor's Office of Emergency Services' (OES) Website (www.oes.ca.gov), or by requesting a copy from the Preparedness Branch of the OES.



- Although Railroad incidents along the Cajon Pass are not a common occurrence, San Bernardino County Fire Department is prepared and trained to respond.



For More Information

A complete detailed Environmental Impact Report is available at the San Bernardino County Website

www.co.san-bernardino.ca.us/landuseservices/Public%20Notices/EIRs/EIRs.htm

Additional private information and pictures are available at the following websites:

www.cajonpassrails.com/photos.html